

The logo features the word "SHARK" in a large, black, serif font, followed by "tm" in a smaller, lowercase, sans-serif font. The text is centered and overlaid on a stylized, light gray graphic of shark fins. The background consists of several overlapping, semi-transparent, light gray curved shapes that create a sense of motion and depth.

SHARK tm

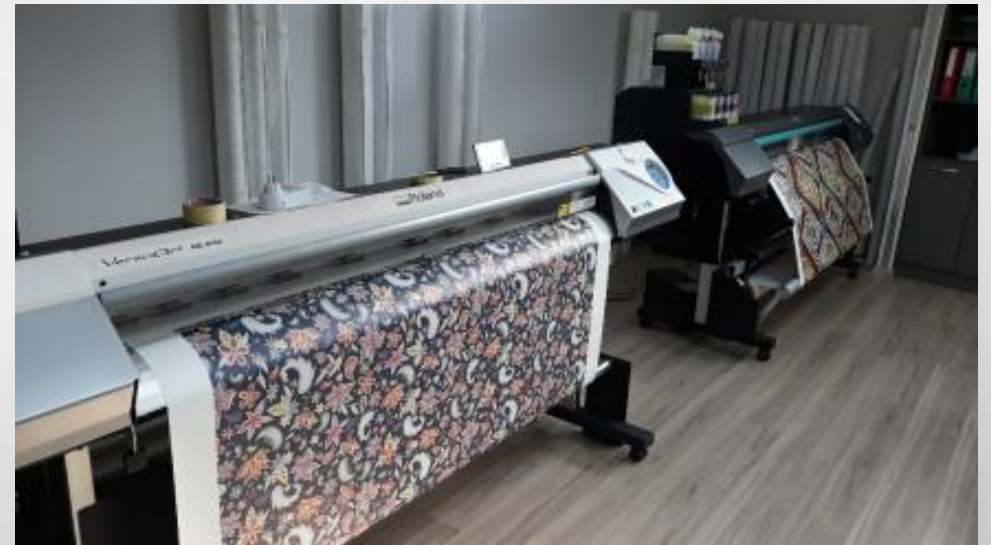
Design Studio & Factory

WWW.SHARKTM.COM

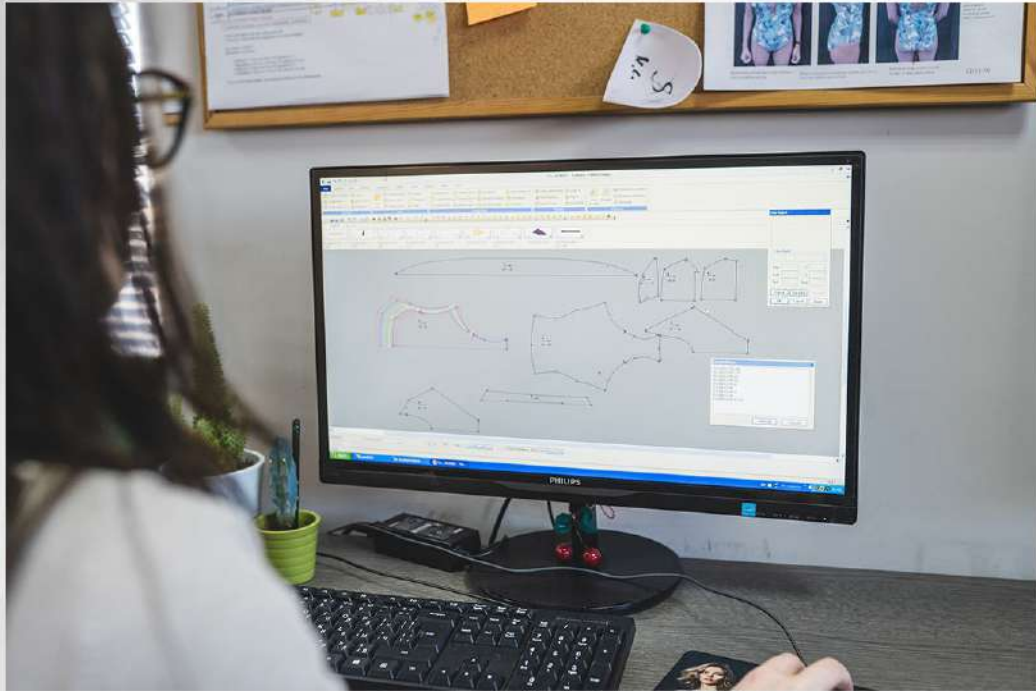
Who We Are:

- A European design house & factory with vast knowledge of design inspiration, color, print, fabrics, components, fit, and production.
- Multiple classifications, servicing all apparel, intimates, and swim.
- Women's as well as **swim core, swim plus, soft intimates, loungewear, beachwear, activewear, ready to wear and menswear.**
- Amazing ability to interpret the needs of the client (vintage, sexy, modern) and provide full-scale design services.
- Print library spanning all fashion needs.
- In-house print capabilities, strike-offs, and lab dips.
- Unsurpassed technical know-how with on-site sampling and live fit capabilities.
- Company-owned production facility on premises to provide the best service.
- Seamstress team and fully modern machinery capable of producing small, exclusive production runs or large-scale units.
- Access to fine European fabrics and hardware as well as excellent alternatives.

Our Head office



Our Head office



Our Head office



Our Head office



Our Head office

- Our head office is based in Sofia, Bulgaria, the Eastern part of EU, which gives us the opportunity to source and order very fast and easily the highest quality fabrics and materials from the best EU suppliers.



Our Head office

- Our team consists of over 50 employees, highly educated and with long-term experience in the industry.
- Our yearly capacity is around 200,000 pieces of high quality products.
- We have access to over 100 of the latest models of sewing machines, printers for sublimation printing, heat transfer machine, cutting machine and other equipment on site.

Our Capabilities:

PRIVATE LABEL

- Fully integrated in-house design, fit, and production teams
- Company-owned, on-site factory in Sofia, Bulgaria
- All apparel categories in women's, men's and kids:
 - Swim (including beach accessories)
 - Tops
 - Bottoms
 - Intimates
 - Sleep/Lounge
 - Activewear

PRIVATE LABEL

- OPP, Highly competitive costs
- Low (per color/style) minimums, excellent for test and roll
- 8 week production time
- Special size capabilities (core and plus)
- American fit, European flair
- EX WORKS and DDP costs with comprehensive knowledge of customs and freight

Our Main Customers:

ModCloth



NIKIN

tree by tree

T E D B A K E R[®]

L O N D O N

Our Audit:



Swimwear

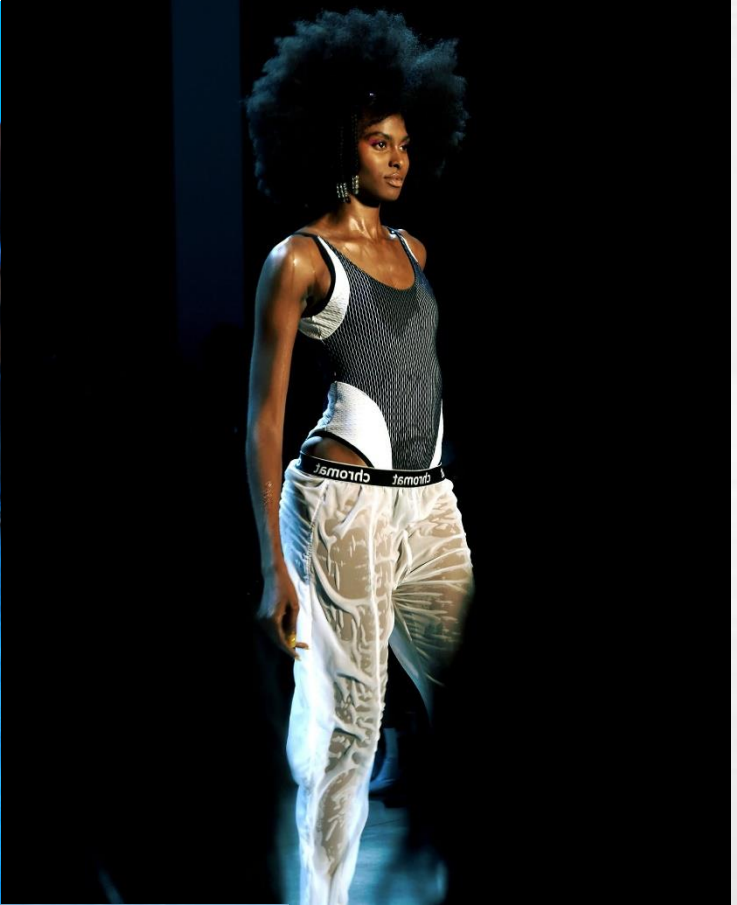












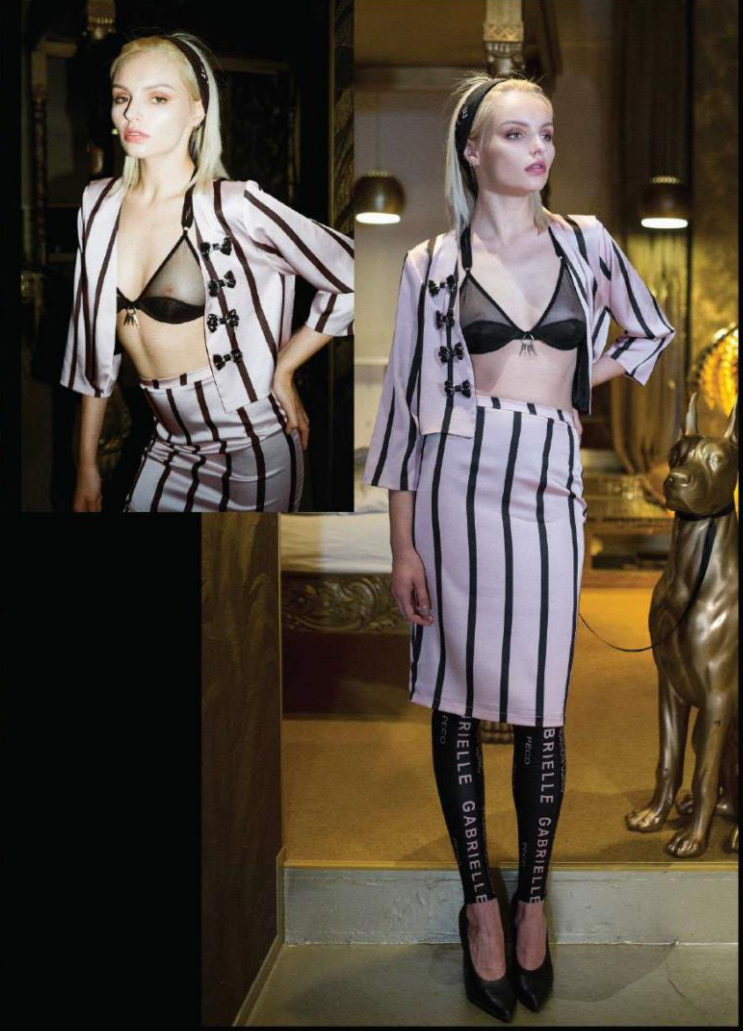
Loungewear



Loungewear

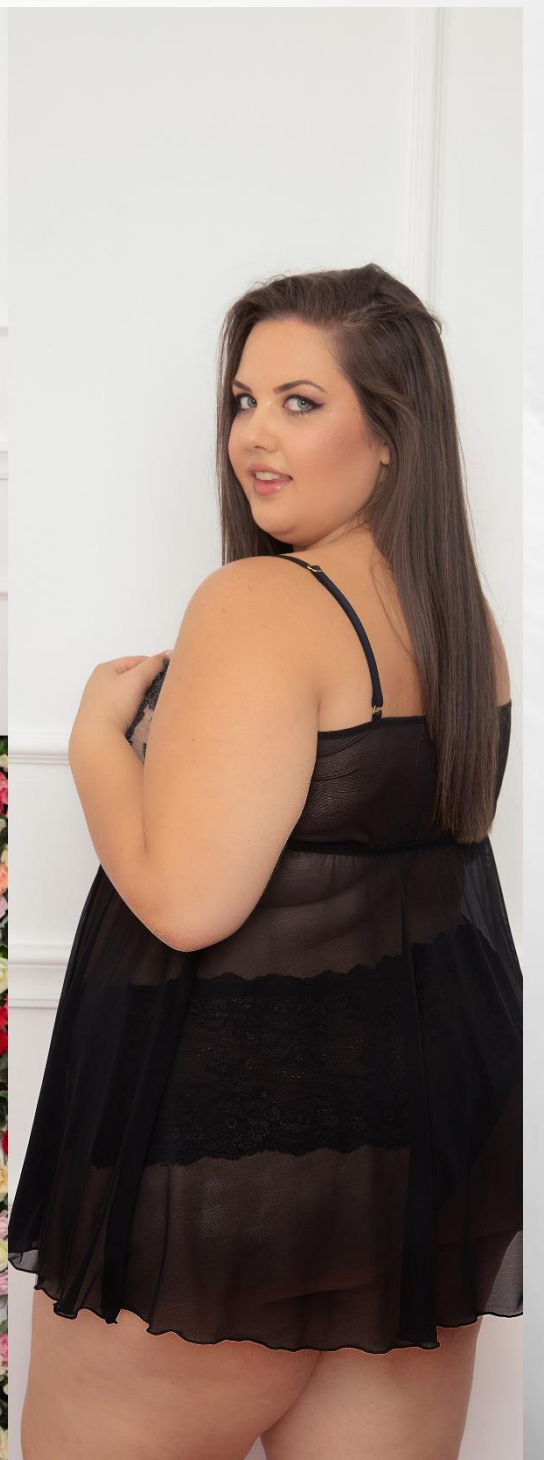


Black cutout shirt and shorts (Yes Master)



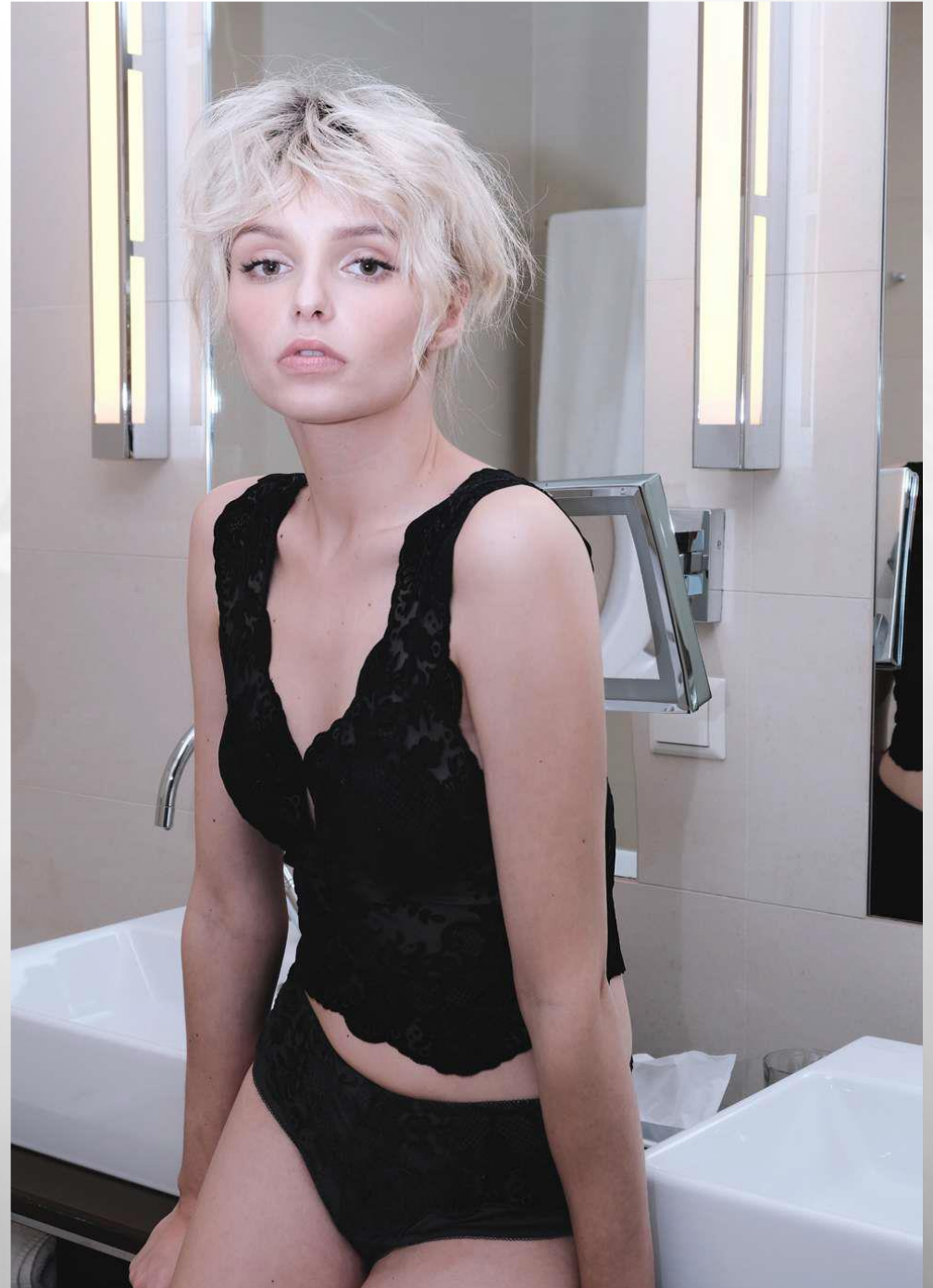
Sleepwear







Intimates











Activewear





Beachwear





Mens Swim



Fashion









